

QUALIFIED RECYCLING PROGRAM

SILENT AUCTION



Disclaimer: All items are sold as is and are considered scrap.
You can call-in your bid the day of the auction by calling (831) 682-0088.



TENT (10 AVAILABLE)
BID #: 200A, 200B, 200C, 200D, 200E,
200F, 200G, 200H, 200I, 200J



CONDUIT SUPPORT - 2 BOXES
BID #: 201



SMALL TILLER
BID #: 202



BAND SAW
BID #: 203



BICYCLES - 1 PALLET
BID #: 204



PLASTIC JUGS (8 COUNT) - 2 AVAILABLE
BID #: 205, 206



CART
BID #: 207



BOX OF MIXED NAILS
BID #: 208



SMALL REFRIGERATOR (10 AVAILABLE)
BID #: 209, 210, 211, 212, 213,
214, 215, 216, 217, 218



ROUND TABLE / FOLDING SIDES (5 AVAILABLE)
BID #: 219, 220, 221, 222, 223



CHAIRS - PALLET OF 4 (4 AVAILABLE)
BID #: 224, 225, 226, 227



CHEST WITH DRAWERS (5 AVAILABLE)
BID #: 228, 229, 230, 231, 232



NIGHT STAND PAIR (4 AVAILABLE)
BID #: 233, 234, 235, 236



DINETTE SET (4 AVAILABLE)
BID #: 237, 238, 239, 240



TIN ROOFING
BID #: 241



NIGHT STANDS - PAIR
BID #: 242



HEADBOARD (4 AVAILABLE)
BID #: 243, 244, 245, 246



BUCKET OF NAILS (3 AVAILABLE)
BID #: 247, 248, 249



HOG CLIPS
BID #: 250



BOX OF NAILS (2 AVAILABLE)
BID #: 251, 252



BUCKET OF NAILS (7 AVAILABLE)
BID #: 253, 254, 255, 256, 257,
258, 259



BOX OF ROOFING NAILS
BID #: 260



LAMP
BID #: 267



STRETCH WRAP - PALLET
BID #: 268



TIN ROOFING/SIDING
BID #: 269



METAL DOORS - 2
BID #: 270



FILING CABINET
BID #: 271



COTS - BOX
BID #: 272



LIGHT HOLDERS - PALLET
BID #: 273



MINI CHRISTMAS VILLAGE
BID #: 274



METAL LOCKER (2 AVAILABLE)
BID #: 275, 276



METAL STAIRS
BID #: 277



CORRIGATED TIN
BID #: 278



FENCE PICKETS
BID #: 279



OLD SCALE
BID #: 280



ROOF LADDER - 14FT (2 AVAILABLE)
BID #: 281, 282



FOUR LADDER - 12FT
BID #: 283



EXTENSION LADDER - 10FT
BID #: 284



TRUCK MOUNT HOIST
BID #: 285



TALL WATER COOLER
BID #: 286



SHORT WATER COOLER (2 AVAILABLE)
BID #: 287, 288



ELECTRICAL FLEX CONDUIT
BID #: 289



I BEAM - 6^{1/2}"X18"X118"X^{5/8}"
BID #: 290



WALK-IN COOLER - 8X8
BID #: 291



CATWALK (4 AVAILABLE)
BID #: 292, 293, 294, 295



RAILROAD TIES - 6 PER PALLET (3 AVAILABLE)
BID #: 296, 297, 298



LUMBER - ASSORTED SIZES (3 AVAILABLE)
BID #: 299, 300, 301



LIBRARY CARD FILE
BID #: 302



KENMORE BBQ
BID #: 303



WINDOWS - 24 (2 AVAILABLE)
BID #: 304, 305



WINDOWS - 12
BID #: 306



WINDOWS - ASSORTED SIZES
BID #: 307



LARGE WINDOW
BID #: 308



UMBRELLA STAND
BID #: 309



FLOOR LAMP
BID #: 310



AMMO CANS BY THE PALLET
BID #: 311



INDIVIDUAL AMMO CANS
BID #: 312



POWER POLE
BID #: 313



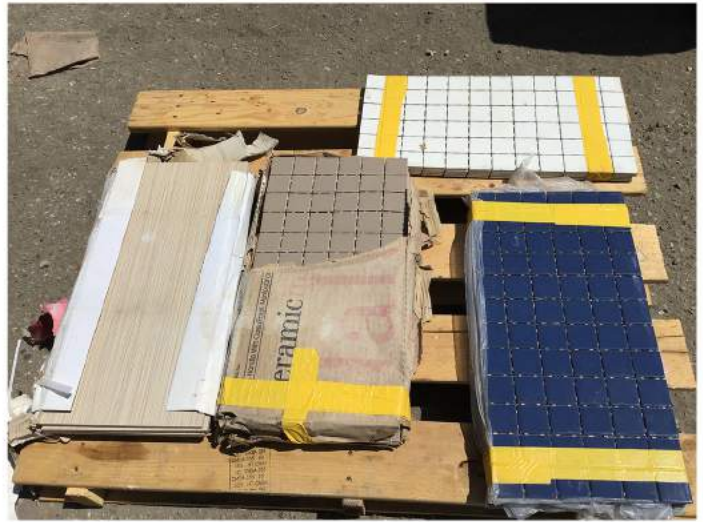
WHITE TILE - PALLET
BID #: 314



BEIGE VINYL TILE - 3 BOXES
BID #: 315



ASSORTED VINLY TILE - PALLET
BID #: 316



ASSORTED FLOOR TILE - PALLET
BID #: 317



BEIGE VINYL TILE - 4 BOXES
BID #: 318



GREY VINYL TILES - 6 BOXES
BID #: 319



I BEAM - 6^{1/2}"X18"X118"X^{5/8}"
BID #: 320



I BEAM - 6^{1/2}"X12"X20'X^{1/2}"
BID #: 321



FLOOR TILE - PALLET
BID #: 322



AIR COMPRESSOR WITH NO MOTOR
BID #: 323



TRAILER
BID #: 324



SPRING LOADED HATCH DOORS (2 AVAILABLE)
BID #: 325, 326



METAL FRAME WITH DRAWER AND SINK
BID #: 327



TABLE LAMP
BID #: 328



METAL STAND
BID #: 329



FOLDING TABLE
BID #: 330



FIXED LEG TABLE
BID #: 331



INTABLE
BID #: 332



WOOD TRUCK BED SLATS (2 AVAILABLE)
BID #: 333, 334



METAL TANK
BID #: 335



COAT HANGERS
BID #: 336



SMALL WALL LIGHTS
BID #: 337



BOX OF PVC COUPLINGS AND OTHER
BID #: 338



AIR COMPRESSOR
BID #: 339